







LEE DAY



2025

TOUR CAMPUS  **MEET FACULTY
& STAFF**  **EXPERIENCE CAMPUS
LIFE**  **WIN SCHOLARSHIPS** 

STAY CONNECTED!

FOLLOW US **#LEEDAY**



Lee University



@leeuniversity

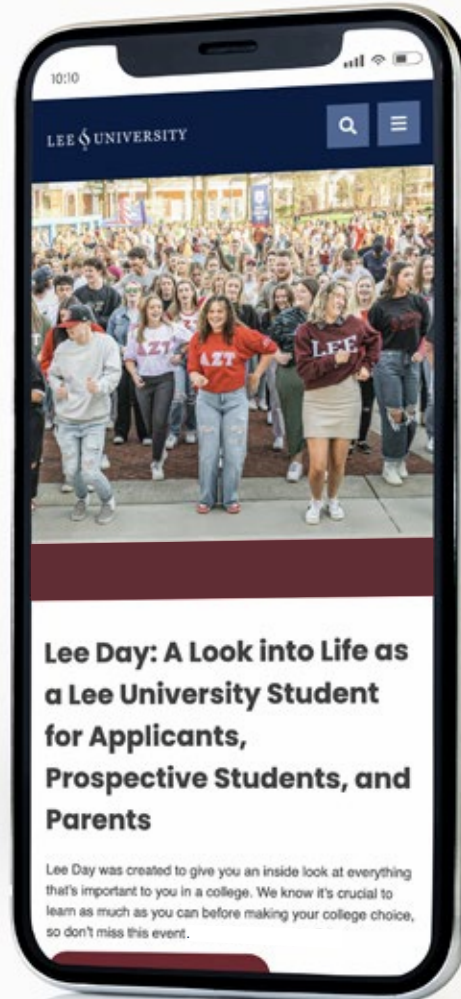


@leeuniversity



@leeuniversity

leeday.live



LEE § UNIVERSITY

Welcome! We have been looking forward to your visit to our campus for weeks!

Most of you are in Cleveland for Lee Day because you will be choosing a college soon. I'm so glad you decided to put Lee University on your short list of possibilities. Take a good look at us this weekend. I think you'll like what you see!

Lee is a wonderful place. My colleagues on the faculty and staff who work here with me are committed to providing excellent academic training in a positive, healthy environment where our students can learn and grow. We do our best around here to ensure that Lee is an institution which is Christ-centered and Spirit-led. And we hope, if you think Lee is right for you, that you'll join us here in the fall and be part of it all!

I hope you enjoy the time you spend on campus with us this weekend. We're so glad you came!

Cordially,



Paul Conn
President of Lee University



FRIDAY SCHEDULE DAY ONE - APRIL 4

CAMPUS MAP ON PAGES 6-7

TIME	EVENT	LOCATION
8:30 am - 6:00 pm	Lee Day Check-In & Registration	Welcome Center - Administration Building
9:00 am - 4:00 pm	Campus Tours	Front Fountain - Administration Building
9:00 am - 2:15 pm	Featured Classes	See <i>Featured Classes Program</i>
9:00 am - 4:00 pm	Financial Aid Personalized Sessions (no appointment required)	Financial Aid Office - Administration Building
9:00 am - 4:00 pm	Residence Hall Open House	See Page 8
11:00 am - 2:00 pm	Lunch for Lee Day Guests (tickets at Lee Day registration)	Deacon Jones Dining Hall
12:00 pm - 3:30 pm	Early Class Selection - by appointment (423-614-8121)	SMC Medlin Lobby
2:00 pm - 5:00 pm	Academic Displays	SOB Lobby
2:00 pm - 2:45 pm	Student Success Initiatives	SON 202 Pat Carroll Lecture Hall
2:00 pm - 3:45 pm	Open House: Office of Racial and Ethnic Relations	CEN 119
3:00 pm - 3:30 pm	Art Program Info Session	MAY 119
3:00 pm - 3:30 pm	Theatre Program Info Session	CAB Buzz Oates Black Box Theatre
3:00 pm - 3:45 pm	Summer Honors Info Session	Pangle Hall
3:00 pm - 3:45 pm	Academic Support Information - Disability Services	SON 202 Pat Carroll Lecture Hall
3:30 pm - 4:00 pm	Art Program Scholarship Portfolio Review	MAY 199
3:30 pm - 4:00 pm	Theatre Program Scholarship Auditions	CAB Buzz Oates Black Box Theatre
4:00 pm - 4:45 pm	Major Discovery - Hear about majors available at Lee	Pangle Hall
4:45 pm - 5:30 pm	Financial Aid Presentation	Pangle Hall
5:30 pm - 6:45 pm	Block Party - Food and Fun	Sharp Pedestrian Mall
7:00 pm - 8:30 pm	5 at 7	See <i>More Information on Pages 16-17</i>
	<ul style="list-style-type: none"> • <i>Intramural Sports+ 3-on-3 Basketball, Sand Volleyball, and More</i> • <i>Colors and Coffee - Painting Party with an Art Professor</i> • <i>Lee Theatre Production - Agatha Christie - A Murder is Announced</i> • <i>Music Showcase Featuring Lee Vocal and Instrumental Ensembles</i> • <i>Shenanigans Student Improv Comedy Troupe</i> 	DeVos Recreation Center CAB 203/204 CAB Buzz Oates Black Box Theatre Conn Center, Pangle Hall, The Chapel Dixon Center
8:30 pm - 10:00 pm	Moonlight Cafe - Live Music and Coffee	Sharp Pedestrian Mall

CAMPUS TOURS

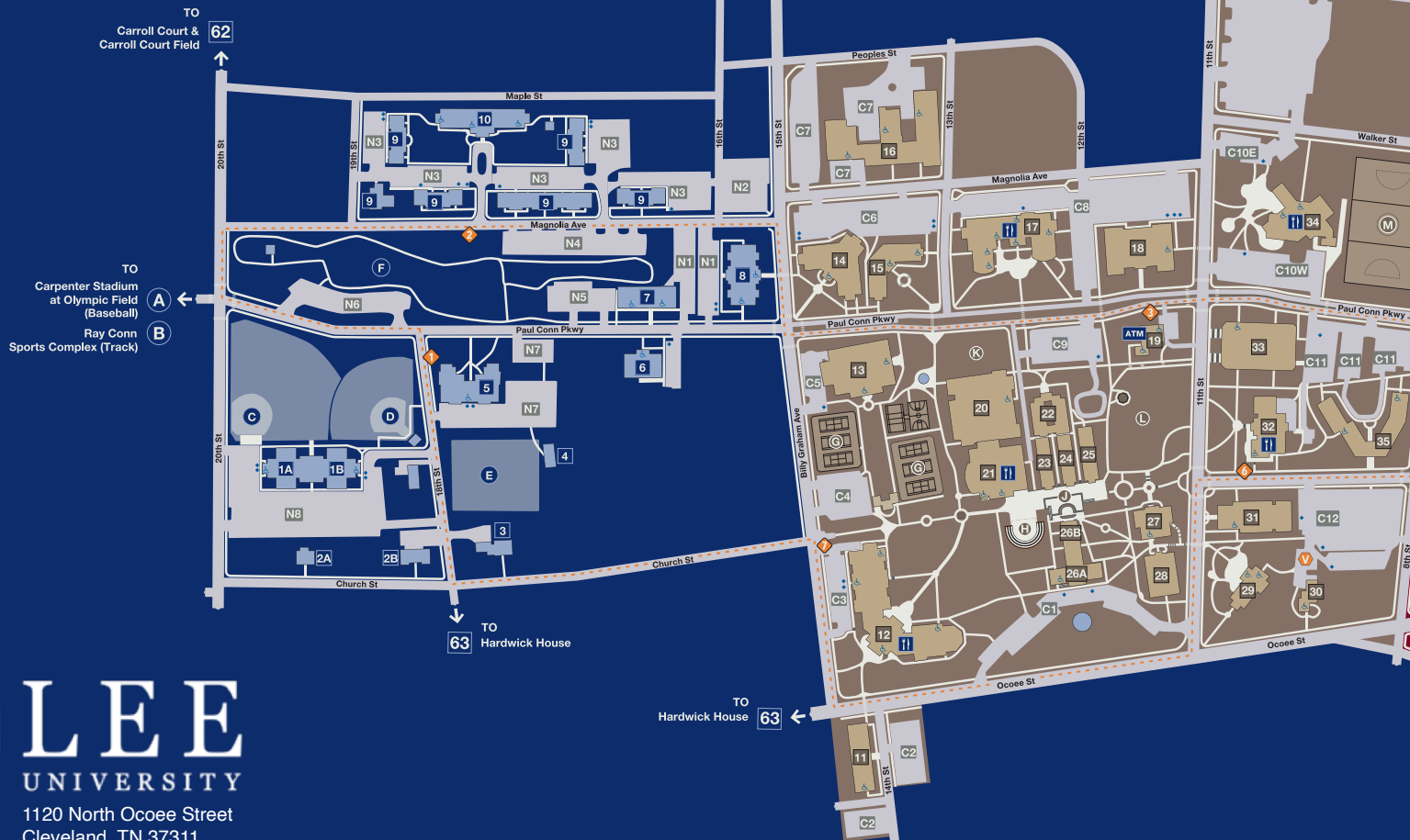
FRIDAY 9:00AM - 4:00PM

SATURDAY 7:30AM - 9:30AM

Higginbotham Administration Building Front Fountain

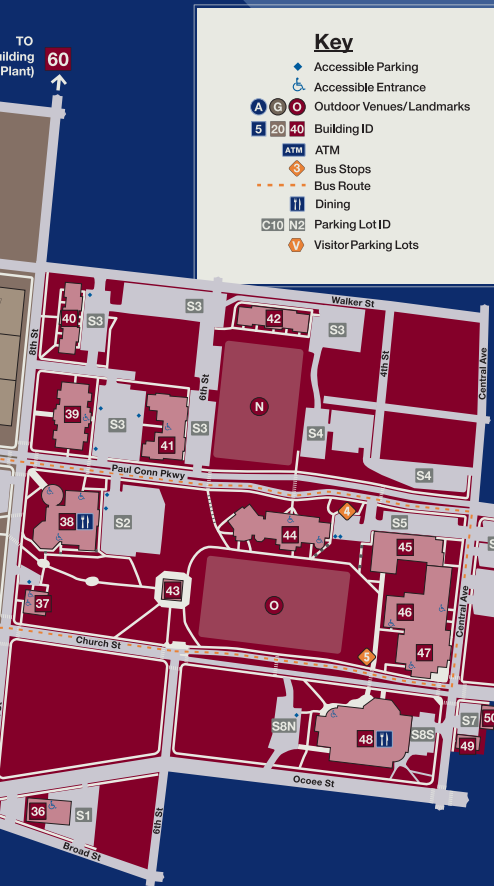


CAMPUSMAP



LEE
UNIVERSITY

1120 North Ocoee Street
Cleveland, TN 37311



Academics

- 48 CAB** Communication Arts Building
- 14 EDU** Helen DeVos College of Education
- 17 HUM** Humanities Center
- 36 MON** Monument Building
- 46 SOB** School of Business Sharp Wing
- 18 CUR** Curtsinger Building - School of Music
- 44 SON** School of Nursing
- 38 SOR** School of Religion
- 12 SMC** Science & Math Complex Beach Wing Medlin Wing
- 34 LIB** Squires Library/Pentacostal Res. Center
- 27 VST** Vest Building
- 28 WMB** Walker Memorial Building

Administration

- 30 ADM** Admissions Center/Visitor's Center
- 61 CSO** Campus Security
- 26B CEN** Centenary Building
- 45 ELC** Early Learning Center(Nursery)
- 7 HEA** Health Services
- 26A HAB** Higginbotham Admin. Building
- 60 HPR** Higgins-Presley Building (Physical Plant)
- 7 LEC** Leonard Center
- 23 LSS** Lower Simmons
- 19 OSD** Office of Student Development
- 27 VST** Vest Building
- 37 WAT** Watkins Building

Athletics

- E AOF** Athletic Operations Field
- 4 AOP** Athletic Operations House
- D BUT** Butler Softball Field
- A CBS** Carpenter Stadium at Olympic Field (Baseball)
- G REC** DeVos Recreation Center
- 13 TEN** DeVos Tennis Center
- 6 MAB** McKenzie Athletic Building
- 20 WKA** Paul Dana Walker Arena
- M SOC** Soccer Field
- C JSF** Souther Field
- B RCC** Ray Conn Sports Complex (Track)

Dining

- 34** Aspetto by Sodexo
- 32** Chick-fil-A
- 21** Deacon Jones Dining Hall
- 12** Dunkin Donuts
- 17** Einstein Bros.Bagels
- 32 48** Starbucks
- 48** Sandella's Flatbread Cafe
- 32 34 38** Simply to Go
- 32** Subway

Multi-Use

- L ALU** Alumni Park
- H AMP** Amphitheater
- 32 PCS** Bookstore (Follett)
- 29 CHA** The Chapel
- 33 CCR** Conn Center
- 49 CRE** Creative Studio
- 50 DMS** Danny Murray Recording Studio
- 43 DCF** Darlia McLuhan Conn Forum & Tower
- 21 DJH** Deacon Jones Dining Hall
- 3 DHS** Dethero House
- N DRF** Dirksen Row Field
- 31 DXC** Dixon Center
- 16 MAY** Mayfield Annex
- 47 PGH** Pangle Hall
- 32 PCS** Paul Conn Student Union
- 32 POS** Post Office (Downstairs PCS)
- F SCP** Schimmels Park
- J SPM** Sharp Pedestrian Mall
- O SCQ** South Campus Quad
- 17 SQH** Squires Recital Hall (Humanities Center)
- K WLN** Walker Lawn

Residential

- 15 AEN** Atkins - Ellis Hall
- 8 HHH** B.L. Hicks Hall
- 1A BOH** Bowdle Hall
- 9 BRT** Brinsfield Row Townhouses
- 62 CAC** Carroll Court - Married Housing
- 2A CSH** Church Street House
- 2B CSA** Church Street Apartment
- 25 CRH** Cross Hall
- 35 DAH** Davis Hall
- 63 HWH** Hardwick House
- 41 KEH** Keeble Hall
- 40 LVE** Livingston East
- 39 LIH** Livingston Hall
- 11 MEH** Medlin Hall
- 10 NHH** New Hughes Hall
- 22 NCH** Nora Chambers Hall
- 1B OBH** O'Bannon Hall
- 35 SHH** Sharp Hall
- 23 SJH** Simmons Hall
- 5 STH** Storms Hall
- 24 THH** Tharp Hall



RESIDENCE HALL OPEN HOUSE

FRIDAY

9:00AM - 4:00PM

SATURDAY

8:00AM - 10:15AM

Residence Hall

Housing Type

Atkins-Ellis (AEH)

Freshman Female Suite Style

Cross-Tharp (CRH/THH)

Freshman/Sophomore Female Suite Style

Sharp-Davis (SHH/DAH)

Freshman/Sophomore Female Suite Style

Keeble (KEH)

Upperclassmen Female Apartment

Storms (STH)

Upperclassmen Female Apartments

Brinsfield Row* (BRT)

Upperclassmen Male & Female Townhomes

**Meet at Storms/Hicks and then walk over*

Bowdle-O'Bannon (BOH/OBH)

Freshman/Sophomore Male Suite Style

New Hughes (NHH)

Freshman/Sophomore/Junior Male Suite Style

B.L. Hicks (HIH)

Upperclassmen Male Apartment

ACADEMIC DISPLAYS

FRIDAY

2:00PM - 5:00PM

School of Business Lobby

SATURDAY

8:00AM - 10:15AM

Individual Department Locations
in Academic Buildings

CONVERSATIONS WITH DEANS & FACULTY

SATURDAY

3:00PM - 3:45PM

School of Business

School of Nursing

School of Music

School of Theology & Ministry

College of Education

Behavioral & Social Sciences

Communication Arts Building

History, Political Science, Humanities & Classics

Language & Literature

Mathematics

Natural Sciences

Engineering

SOB Room 300

SON Room 100

SOM Second Floor Lobby

STM Room 200, Reading Room

HDCOE Lobby

HUM 201

CAB Lobby/Atrium

HUM 100

Dixon 101

SMC Room 358

SMC Room 255

SMC Room 357



STUDENT SUCCESS INITIATIVES

FRIDAY

2:00PM - 2:45PM

SON 202

Pat Carroll Lecture Hall,
School of Nursing

We understand that transitioning to college life poses unique challenges for many students. Join us to explore specialized programs crafted to ensure students flourish academically, socially, and personally during their college journey.





MAJOR DISCOVERY

FRIDAY

4:00PM - 4:45PM

Pangle Hall

Whether you're set on your major or still exploring your options, this is the perfect opportunity to discover the full spectrum of academic programs available at Lee.



BLOCK PARTY!

Food and Fun

FRIDAY

5:30PM - 6:45PM

Sharp Pedestrian Mall



SUMMER HONORS INFO SESSION

FRIDAY

3:00PM - 3:45PM

Pangle Hall

Summer Honors program offers a unique opportunity for academically talented high school juniors and seniors to experience college life firsthand. From June 15–June 27, over 200 students will engage in an exciting and challenging environment, earning six college credits while exploring the vibrant campus community. This two-week program provides a true taste of college life, filled with memorable experiences, dynamic learning, and lasting connections.





FRIDAY
NIGHT

LEE  DAY

5^{AT} 7

EXPERIENCE LIFE AS A LEE STUDENT WITH 5 EVENTS AT 7:00PM!
DETAILS ON NEXT PAGE ►

5^{AT} 7

CHOOSE FROM 5 EXCITING EVENTS
CREATED TO HIGHLIGHT THE LEE STUDENT
EXPERIENCE OPEN TO YOUR ENTIRE FAMILY.

MUSIC SHOWCASE: *Conn Center, Pangle Hall, The Chapel*

Lee has a long history of excellent vocal and instrumental music. Come hear a variety of groups including the Ladies of Lee, Campus Choir, the Evangelistic Singers, Wind Ensemble, and many more. Feel free to switch between venues, too.

LEE THEATRE PRODUCTION “A MURDER IS ANNOUNCED”: *CAB Buzz Oates Black Box Theatre*

An announcement in the local paper states the time and place of an imminent murder. When an unknown visitor to Miss Blacklock’s Victorian home dies under the prescribed circumstances, Miss Marple turns up to solve the case. The production requires tickets which are free to Lee Day Guests and can be acquired in the Communication Arts Box Office between 12:00 and 6:00PM or on Eventbrite by searching Lee Theatre and using the code LeeGuest. Sticking around after Lee Day? Catch the Saturday 7:30PM or Sunday 2:30PM show!

MUSIC SHOWCASE



LEE THEATRE PRODUCTION





SHENANIGANS



COLORS AND COFFEE



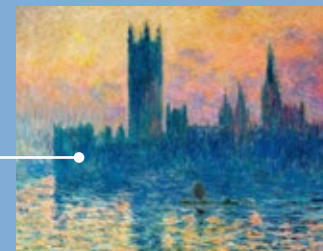
INTRAMURALS

SHENANIGANS STUDENT IMPROV: *Dixon Center*

Regularly packing out performances, Shenanigans is certainly a Lee student favorite with improv comedy that's sure to make you laugh, groan, and maybe even cry.

COLORS AND COFFEE - PAINTING PARTY WITH AN ART PROFESSOR: *CAB 203/204*

Have you ever wanted to learn to paint like one of the greats? Here's your chance. The paints, brushes, canvas, AND coffee will all be provided for you. This year we're painting a Monet. Seats fill up fast!



INTRAMURAL SPORTS+: *DeVos Recreation Center*

Hundreds of students participate in dozens of intramural sports on the Lee campus. Lace up your sneakers, and let's see if you're ready to win a highly-coveted Lee Intramural Champion T-Shirt.

AFTER 5 AT 7, CLOSE OUT THE DAY ON THE PEDESTRIAN MALL AT THE POP-UP MOONLIGHT CAFÉ WHERE WE'LL RELAX WITH LIVE MUSIC, COFFEE, AND S'MORES.



SATURDAY SCHEDULE DAY TWO - APRIL 5

CAMPUS MAP ON PAGES 6-7

TIME EVENT

LOCATION

7:00 am - 10:30 am

Lee Day Check-In & Registration

Welcome Center - Administration Building

7:30 am - 9:30 am

Campus Tours

Administration Building - Front Fountain

8:00 am - 10:15 am

Early Class Selection - by appointment (423-614-8121)

Various Locations

8:00 am - 10:15 am

Academic Displays

See Page 9

8:00 am - 10:15 am

Residence Hall Open House

See Page 8

8:00 am - 10:15 am

School of Nursing Test Drive (come and go)

SON 105

9:00 am - 9:45 am

Financial Aid Presentation (coffee provided)

SMC Walker Lecture Hall

9:00 am - 10:15 am

Financial Aid Personalized Sessions (no appointment required)

HAB Financial Aid Office

10:30 am - 12:00 pm

Spotlight on Your Life at Lee

Conn Center

12:00 pm - 1:30 pm

Parents Lunch and Learn - Meet with President Conn

Nichols Courtyard / Dixon Center

12:00 pm - 1:30 pm

Transfer Student Luncheon

SMC Great Room

12:00 pm - 1:30 pm

High School Senior Luncheon

Walker Arena

12:00 pm - 1:30 pm

High School Junior Luncheon

DeVos Recreation Center

12:00 pm - 1:30 pm

High School Freshman and Sophomore Luncheon

Deacon Jones Dining Hall Portico

1:30 pm - 3:30 pm

Student Club & Organization Displays

Sharp Pedestrian Mall

1:30 pm - 3:30 pm

Financial Aid Personalized Sessions (no appointment required)

Financial Aid Office - Administration Building

1:30 pm - 4:00 pm

School of Music Auditions

HUM Squires Recital Hall

2:00 pm - 2:45 pm

Academic Support Information - Disability Services

HUM Johnson Lecture Hall

2:00 pm - 2:45 pm

Kairos Honors Info Session

SMC 250

2:30 pm - 3:30 pm

Flames Fan Fest - Talk with Flames staff and coaches

Olympic Field

3:00 pm - 3:45 pm

Conversations with Deans and Faculty

See Page 9

4:00 pm - 5:00 pm

Worship Rally - with President Conn, LeeU Worship & Voices of Lee

Conn Center

*Scholarship Drawings immediately following Rally. (10) Scholarships to be given - must be present to win.

Conn Center

5:00 pm - 6:30 pm

Cook Out for All

Alumni Park

SPOTLIGHT ON YOUR LIFE AT LEE

SATURDAY 10:30AM - 12:00PM

Conn Center

This is an event you don't want to miss! Dive deep into the heart of the Lee student experience, where you'll receive exclusive insights and firsthand stories. Engage in an entertaining and informative session that will leave you more than just impressed – you'll be convinced that Lee is the ideal place for your academic, personal, and spiritual growth.





FLAMES FAN FEST

Join us for a game with the nationally ranked Lee baseball team—tailgate style! Experience being #FiredUp for one of the best NCAA DII athletic programs in the country.

SATURDAY

2:30 PM - 3:30 PM

Olympic Field on the North Campus

PARENT LUNCH & LEARN

with President Paul Conn

Parents, this is your opportunity to hear from Dr. Conn as he shares about the love and care we will show your student while they are at Lee. Plus, he will address some frequently asked questions parents have.

SATURDAY

12:00PM - 1:30PM

John D. Nichols Courtyard / Dixon Center



TRANSFER STUDENT LUNCHEON

SATURDAY

12:00PM - 1:30PM

SMC Great Room



HIGH SCHOOL FRESHMAN & SOPHOMORE LUNCHEON

SATURDAY

12:00PM - 1:30PM

Deacon Jones Dining Hall Portico



HIGH SCHOOL JUNIOR LUNCHEON

SATURDAY

12:00PM - 1:30PM

DeVos Recreation Center

HIGH SCHOOL SENIOR LUNCHEON

SATURDAY

12:00PM - 1:30PM

Paul Dana Walker Arena





STUDENT CLUB & ORGANIZATIONS DISPLAYS

Meet students from over 100 Greek, academic, service, and diversity clubs and more!

SATURDAY

1:30PM - 3:30PM

Sharp Pedestrian Mall

FINANCIAL AID PERSONALIZED SESSIONS

(NO APPOINTMENT NEEDED)

This is an opportunity for you to get one-on-one attention from our financial aid professionals. With the FAFSA challenges this year, we know you probably have questions, and we want to help.

FRIDAY

9:00AM - 4:00PM

Financial Aid Office,
Administration Building

SATURDAY

9:00AM - 10:15AM

1:30PM - 3:30PM
Financial Aid Office,
Administration Building





WORSHIP RALLY

*with President Conn, LeeU Worship,
and Voices of Lee*

*Experience what it's like to attend a Lee
chapel service. We couldn't think of a
better way to wrap up the weekend than
worshipping together.*

SATURDAY
4:00PM - 5:00PM
Conn Center

COOKOUT FOR ALL!

SATURDAY
5:00PM - 6:30PM
Alumni Park



SCHOLARSHIP DRAWING

*10 Scholarships available!
(Must be present to win)*

Tickets to win scholarships are given to students at the various class lunches on Saturday. Make sure you attend the lunch and come to the Worship Rally.

SATURDAY
IMMEDIATELY FOLLOWING WORSHIP RALLY
Conn Center



LEE  UNIVERSITY

1120 North Ocoee Street - Cleveland, Tennessee 37311
leeuniversity.edu - 1-800-LEE-9930

FOLLOW US **#LEEDAY**



Lee University



@leeuniversity



@leeuniversity



@leeuniversity